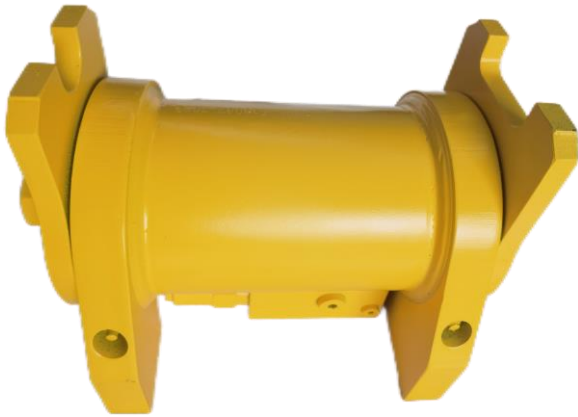


ACTUTORQ™



Increase Productivity

Hydraulic Tilt Actuators, as a construction equipment attachments, are perfect products to increase the profitability and versatility of backhoes or excavators by simply tilting the attachment instead of moving entire machine. You can move it to any operating positions with tilt actuator into your attachment tools.



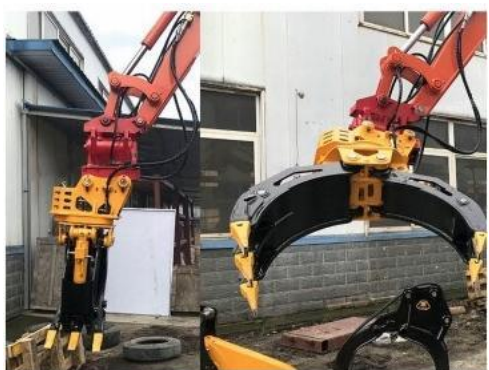
Improve work site efficiency

Hydraulic Tilt Actuators will provide you with the ability to get more work done in less time and can perform work faster, safer and easier.



Performing multiple function

Hydraulic Tilt Actuator is ideal for performing every day tasks, or completing jobs, allowing you to function with less equipment. Our equipment have multiple function such as for cleaning ditches, clearing land, digging beveled trenches, spreading rip-rap, and positioning brush cutters, movers and hydraulic hammers.



- Landscaping
- Ditch cleaning
- Land cleaning
- Demolition
- Brushcutting
- Ripping
- Site development
- Specialty applications

Reliable performance

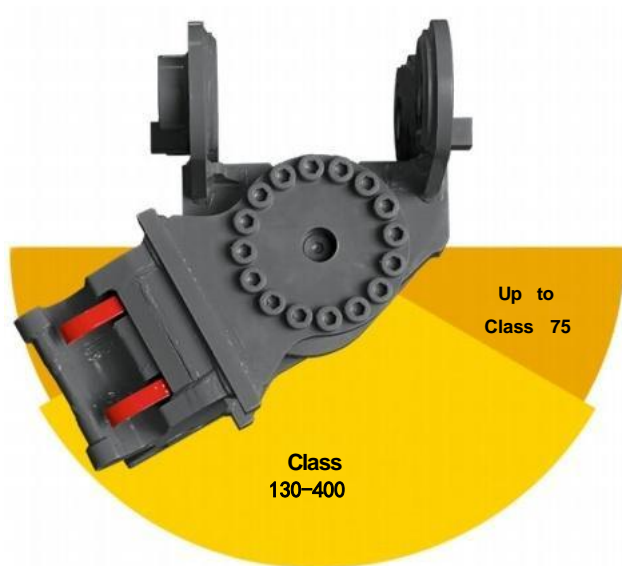
Hydraulic Tilt Actuator will provide you with the ability to get more work done in less time. You will receive a tilting attachment with unmatched versatility and durability for a machine equipped with tilt actuator.



Maximum Tilt up to 180 degree.(2x90 degree)

Solid, compact, robust, safe and powerful.

No Cylinder rods or external moving parts.

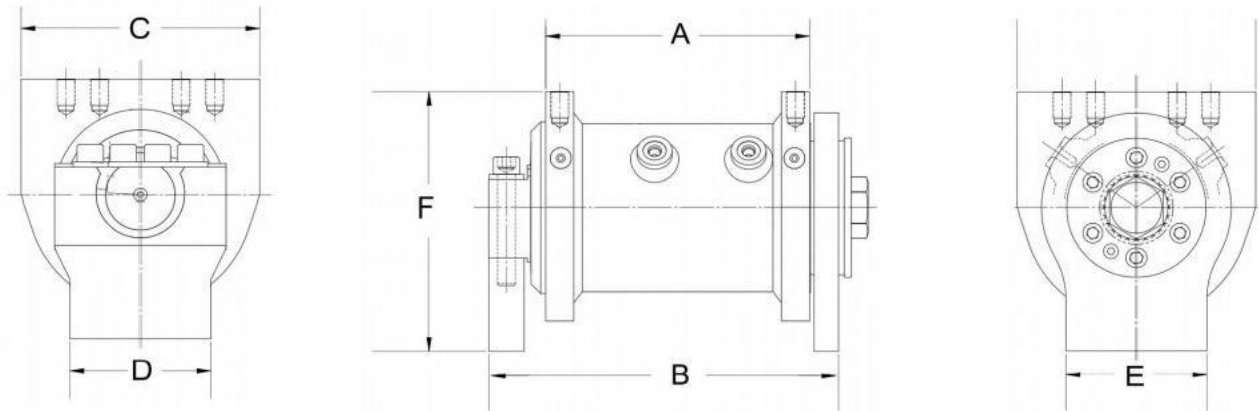


Integrated pressure relief valve prevents overload of the tilt motor.

Low maintenance as a result of lubrication over the hydraulic oil of the grapple slewing gear.

Size optimized for the respective machine classes.


Technical data and dimensions



Model	Max. Machine Weight	Appro. Weight	Torque (in-lb@3000psi) (Nm@210bar)	Holding Torque (in-lb@3000psi) (Nm@210bar)	Total Tilt	Displacement	Dimension (mm)					
							A	B	C	D	E	F
DYT05	3.970 lb (1,800 kg)	55 lb (25 kg)	8,200 in-lb (930 Nm)	20,000 in-lb (2,260 Nm)	180°	0.8-1.5 gpm (3-6 l/min)	212	230	190	98	98	203
DYT06	8,400 lb (3,800 kg)	115 lb (52 kg)	25,400 in-lb (2,870 Nm)	64,300 in-lb (7,270 Nm)	180°	0.8-1.5 gpm (3-6 l/min)	238	335	216	127	127	230
DYT07	15,000 lb (6,800 kg)	185 lb (84 kg)	39,000 in-lb (4,300 Nm)	95,700 in-lb (10,800 Nm)	180°	1.5-3 gpm (6-12 l/min)	288	378	276	152	145	280
DYT08	20,000 lb (9,100 kg)	243 lb (110 kg)	63,700 in-lb (7,350 Nm)	152,700 in-lb (17,250 Nm)	180°	3-5 gpm (12-20 l/min)	345	488	270	155	180	285
DYT09	28,700 lb (13,000 kg)	401 lb (182 kg)	88,670 in-lb (10,020 Nm)	234,100 in-lb (26,450 Nm)	134°	6-7 gpm (24-28 l/min)	372	495	210	375	260	300
DYT10	45,000 lb (20,000 kg)	485 lb (220 kg)	121,870 in-lb (13,770 Nm)	322,300 in-lb (36,420 Nm)	134°	6-8 gpm (24-32 l/min)	408	535	445	254	290	347
DYT11	60,000 lb (27,000 kg)	705 lb (320 kg)	166,600 in-lb (18,830 Nm)	423,400 in-lb (47,840 Nm)	134°	8-11 gpm (32-44 l/min)	440	595	480	268	268	395
DYT12	75,000 lb (35,000 kg)	948 lb (430 kg)	210,350 in-lb (23,770 Nm)	549,700 in-lb (62,110 Nm)	134°	9-13 gpm (36-52 l/min)	495	642	530	320	270	450

* Data may vary. Please contact us for the drawing.

* Custom production is acceptable.



Distributed By

FLUID ENERGY CONTROLS INC.

201 Gemini Ave.

Brea, CA, 92821, USA

sales@fecintl.com

+1 323-642-6456

www.fecintl.com